

ASPiON ■ G-Log  
 ASPiON ■ G-Log   
 ASPiON ■ G-Log 2  
 ASPiON ■ G-Log 2 

ASPiON ■ G-Log  
 PREMIUM

Monitoring shocks and climate during transport

Wireless. Inexpensive. Long lasting.



## Configuration manual

Configuration program  
 and ASPiON G-Log Premium

Find updates, FAQs and more useful information  
 online in our ASPiON customer portal at  
[www.aspion.de/en](http://www.aspion.de/en)

WINNER  
  
 BEST OF  
 INDUSTRY  
 AWARD



INNOVATION BW  
 2021



ASPiON

ASPiON GmbH ■ 76149 Karlsruhe ■ Germany  
[www.aspion.de](http://www.aspion.de) ■ +49 721 / 85149-128 ■ [support@aspion.de](mailto:support@aspion.de)

## Contents

Contents	2
Configuration program and ASPiON G-Log Premium	3
1. Introduction.....	3
2. System requirements .....	3
3. Installation in the company network and language settings .....	4
4. Data backup and recovery.....	5
5. Export .....	6
6. Installing ASPiON G-Log Premium.....	8
6.1 Server settings for cloud storage .....	9
6.2 Data transfer .....	10
6.3 ASPiON G-Log Cloud Service .....	11
6.4 Activating the cloud service .....	12
6.5 Deactivating the cloud service .....	13
6.6 Error handling .....	14
7. Program installation for additional users.....	15
8. Operating the sensors with ASPiON G-Log Premium.....	15
8.1 Activation via PC software and card reader.....	15
8.2 Activation via Smartphone App via BLE – only for ASPiON G-Log 2 (incl. Waterproof) .....	15
9. Automatic transfer of analyses .....	17
Contact and support	18
Manufacturer .....	18

## Configuration program and ASPION G-Log Premium

### 1. Introduction

With the configuration program for networks and ASPION G-Log Premium, administrators and users can enhance and optimize the operation and data retrieval in a company as follows:

- The network installation enables shared data administration and access to data for all users
- Language setting
- Data backup including recovery
- Exports and export formats of data and storage as archive
- **ASPION G-Log Premium, as software-based cloud service**, extends the solution with the following features:
  - Cloud storage, hosting and operation in a German data center, TÜV certified (German testing laboratory)
  - Starting ASPION G-Log 2 data loggers in delivery state via Smartphone App through BLE. This enables users to activate the loggers without PC software/card reader and can, for example, be done by a service provider from anywhere.
  - Automatic transmission of analyses, read out with the Smartphone App
  - Automatic transmission of analyses, read out with the ASPION G-Log Manager PC software and NFC card reader or BLE which are not connected to the network (remote computer).

The following overview illustrates the interplay, the structure and the architecture.

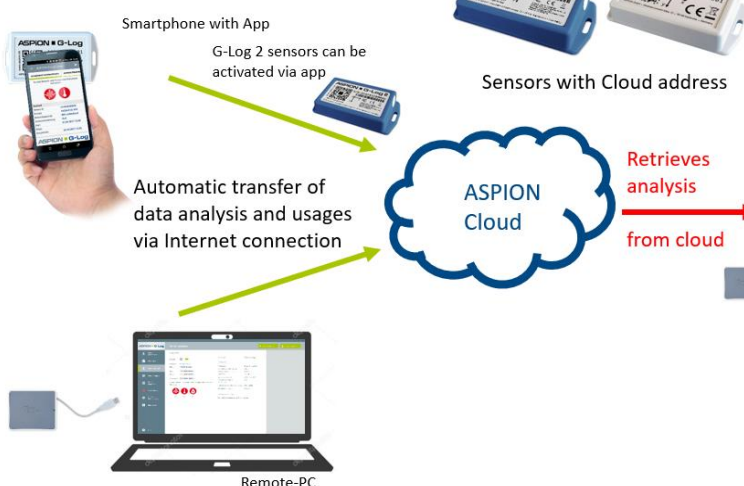
### ASPION G-Log Premium: Technology and function overview

**ASPION**  
ACTIVE SENSORS & POSITIONING

#### Outside the company network

##### Reading out sensors on site

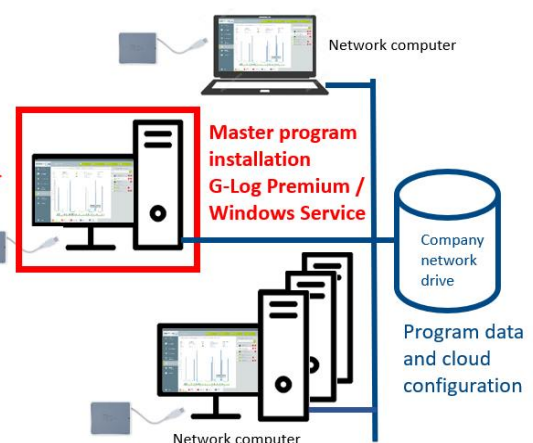
- via G-Log App
- Remote computer with locally installed G-Log Manager (Standard version) + card reader/BLE



#### Inside the company network

##### G-Log Manager Premium within the network

- Sensors are configured with Cloud address
- Local installation of G-Log Manager Premium on PCs + program data (profile, usage list, data analysis) on network drive



Architecture and components in the network and ASPION G-Log Premium.

### 2. System requirements

Please note the following system requirements for your PC system:

- Windows operating system Version 10 or later
- Internet access via port 443 (https access)
- .NET Framework V4.8 or later

### 3. Installation in the company network and language settings

In a company network with several users and shared data access, the installation is made by indicating a commonly shared network drive where data can be stored. The path is entered during installation, (→ see User manual – PC software, chapter 2, "Installation"). You can also set up a shared network drive with this configuration program.

Start the "G-LogConfig.exe" configuration program via the context menu (right mouse click) "Run as administrator":



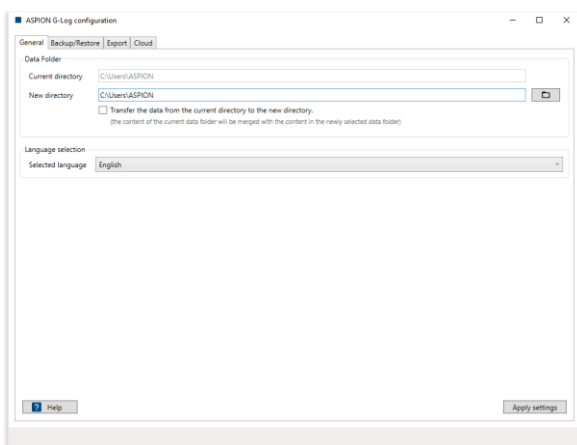
The "G-LogConfig.exe" configuration program is stored in the same directory as the ASPION G-Log Manager.

Example: C:\Program Files (x86)\ASPION.

The configuration program starts with the general settings.

For shared data access, select a network directory as data folder. All data is stored in this directory.

**Please note:** If the system does not recognize the specification of a mapped network drive, enter the UNC path (server path) directly. Example: \\exampleserver\folder\subfolder



If you already have data such as profiles and analyses from a local installation, you can use the "Transfer the data from the current directory to the new directory." function to copy or move existing data to a shared network folder. In doing so, you enable all users to access all program data in the network.

To change the language of the installation, go to the drop-down menu.

With the **Apply settings** button, you save all entries made in the currently active area.

By clicking the **Help** button, you can access the Configuration user manual.

#### Program data in the company network

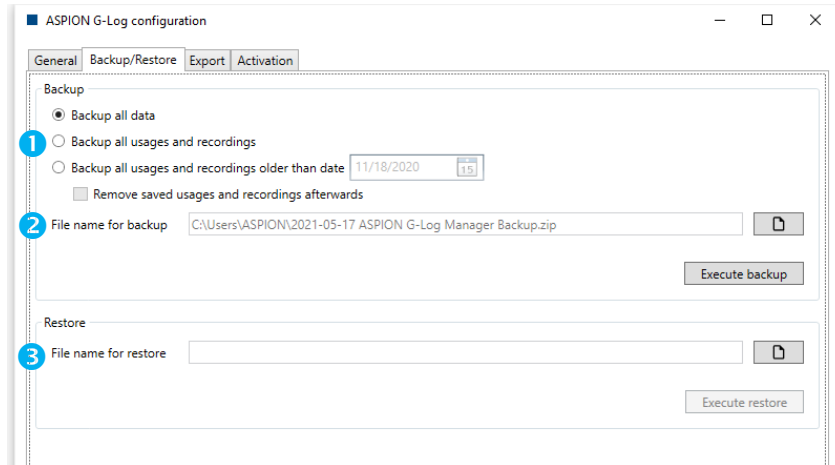
All program data, such as the usage list, profiles and data analyses are updated automatically for all users when operating in the company network, for example:

- If a user deletes an entry from the usage list, this entry is also deleted from all other users' lists.
- If a user adds a new profile, this profile will be immediately available to all users.
- If analyses will be exported, these analyses will be displayed for all users.
- If a sensor is read out with the ASPION G-Log Manager and card reader, the analysis is directly stored in the company network for shared access.
- If ASPION G-Log Premium is saved in the company network, all users work with ASPION G-Log Premium.

## 4. Data backup and recovery

To back up and restore data, use the following settings in the ASPION G-Log configuration program:

**Tip:** The more data, the longer it takes to load the program. Therefore, we recommend to regularly back up data that you do not need any longer.



### 1 Backup: Define how you want to back up the data. Select from

- Back up all data
  - Back up all usages and analyses
  - Back up all usages and analyses that are older than [date selection]
- You can also remove all secured usages and analyses afterwards

### 2 File name for backup: Enter the storage location and the file name for your backup file as .ZIP file. Click **Execute backup** to execute the backup.

### 3 File name for restore: Select here the data backup you have already stored. Click **Execute restore** to restore the secured data to your current program data directory. The ASPION G-Log Manager displays all data.

The backup can be executed in the command line. Display of parameters:

G-Logconfig.exe /Help

```

g-logconfig /help

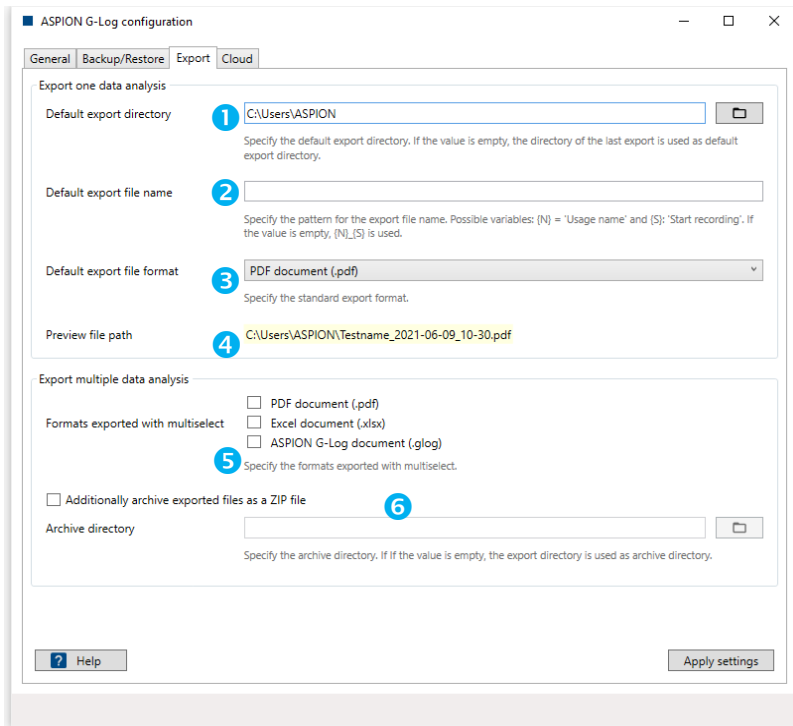
G-LogConfig - Help
=====
usage: G-LogConfig.exe /Backup[=mode] [/Date=YYYYMMDD] [/Folder=DirectoryName] [/RemoveSaved] [/AutoClose]
- /Backup: Perform backup according to given mode
  =mode is =AllData|=AllUsagesAndRecordings|=UsagesRecordingsOlderThan
  - missing or =AllData: backup all data
  - =AllUsagesAndRecordings: backup all usages and recordings
  - =UsagesRecordingsOlderThan: backup all usages and recordings older than given date
    (requires parameter /Date)
- /Date=YYYYMMDD: backup all usages and recordings older than given date
  date format: 4 digits year, 2 digits month, 2 digits day (e.g. =20200101)
  (only valid with /Backup=UsagesRecordingsOlderThan)
- /RemoveSaved: remove saved usages and recordings after backup
  (only valid with /Backup=UsagesRecordingsOlderThan)
- /Folder=DirectoryName: the backup file '2021-05-18 ASPION G-Log Manager Backup.zip' is stored in the
  given folder (instead of the default folder 'D:\Users\MartinaWoehr\Documents')
- /AutoClose: Automatically close console window after backup
- /Help: Show this help screen

Press enter to exit...

```

## 5. Export

The ASPION G-Log configuration program offers the following settings to export data analyses:



### a) Export one data analysis

- 1 **Default export directory:** Here, you define the directory that will be displayed as default export directory when exporting an analysis from the ASPION G-Log Manager program. If you do not enter a value, the directory path of the last export is used.
- 2 **Default export file name:** Here you define the file name that will automatically be suggested when exporting an analysis from the ASPION G-Log Manager program. The following variables are supported:

{N}: Usage name

{S}: Time when the recording was started (JJJJ-MM-TT\_HH-MM)

You can combine a prefix and suffix with the variables. If you do not specify any values, "{N}\_{S}" will automatically be used as file name. Please make sure not to use empty spaces, umlauts or special characters in the variables.

Example:

[Data analysis\\_Shipment123\\_2018-02-29\\_10-30\\_Service](#)

Prefix      [Data analysis](#)

Variables: {N} = Shipment123      Name of usage when writing the sensor  
               {S} = 2018-02-29\_10-30      Date and time when recording was started

Suffix      [\\_Service](#)

- 3 **Default export file format:** Here you define the file format which is automatically suggested as default format when exporting a data analysis from the ASPION G-Log Manager program. Select from

- PDF document (.pdf)
- Excel document (.xlsx)
- ASPION G-Log document (.glog)

④ **Preview file path** shows you an example of your settings including prefix and suffix.

**b) Export of multiple analyses**

⑤ **Formats exported with multiselect:** Here you define the file format that will automatically be suggested as default format when exporting several data analyses from the ASPION G-Log Manager program. If you do not enter any specifications, users can manually select the desired export format from the multiselect option.

⑥ **Additionally archive exported files as ZIP file:** If you export several data analyses, you can define that these data analyses are automatically archived. Activate the "Additionally archive exported files as .ZIP file" option and enter the archive directory. The analyses are then stored with the desired export formats as .ZIP file in the specified archive directory.

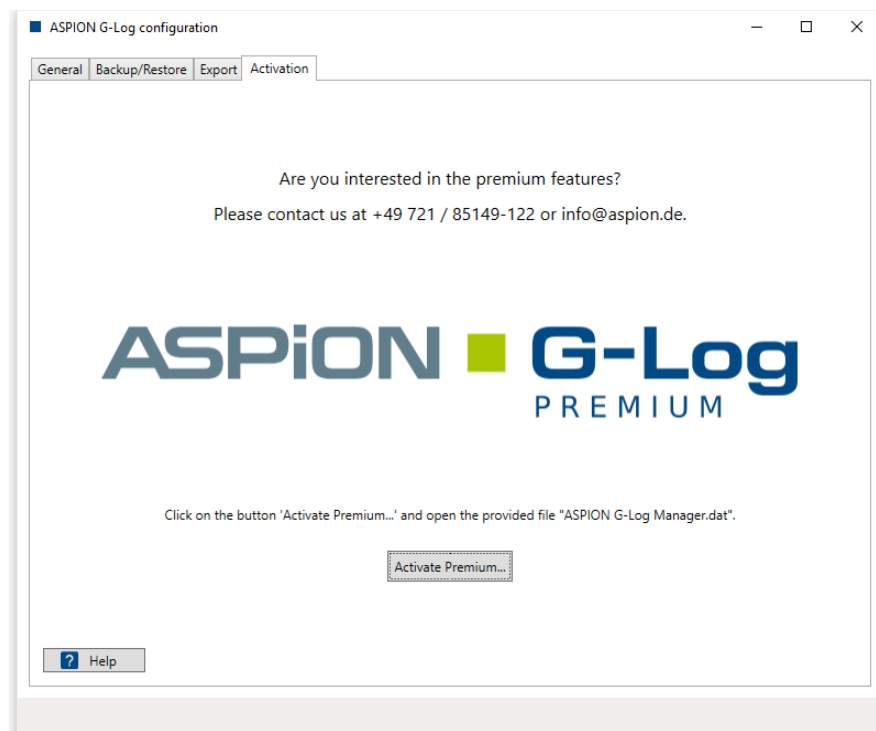
With the **Apply settings** button, you save all entries made in the currently active area.

## 6. Installing ASPION G-Log Premium

You set up the ASPION G-Log Premium program including cloud storage in two steps:

1. The **installation of the master program and settings** including cloud storage and access control. You either set up the master program as a normal program version that can be used by one user at a time, or as a Windows service on a PC/server.
2. The **installation for additional users** with access to shared program data. You set up the program for additional users locally on the respective computer. The program data is stored in the network for shared access.

**Please note:** The active data transfer of data through the master program installation is only made during active operation. Therefore, please ensure that this computer or server is regularly operated.

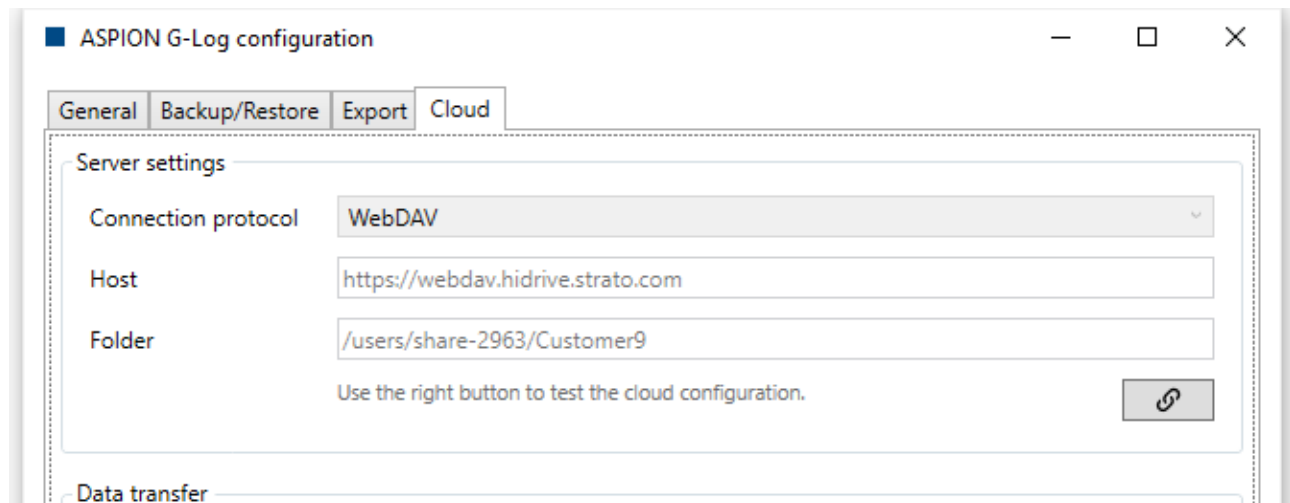


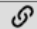
To set up the cloud storage feature, click **Activation** and then **Activate Premium**. Then select the "ASPION G-Log Manager.dat" file. The program then displays the server settings for the cloud storage.



## 6.1 Server settings for cloud storage

The setting for the cloud storage controls the transfer of the cloud address when writing data to the sensor. Data analyses which are read out with the ASPION G-Log Smartphone App are transferred to this cloud storage via WLAN/mobile telephony by the App. The same applies to the transfer of analyses that are read out from a remote computer with ASPION G-Log Manager and card reader, for example, by service employees in the field.

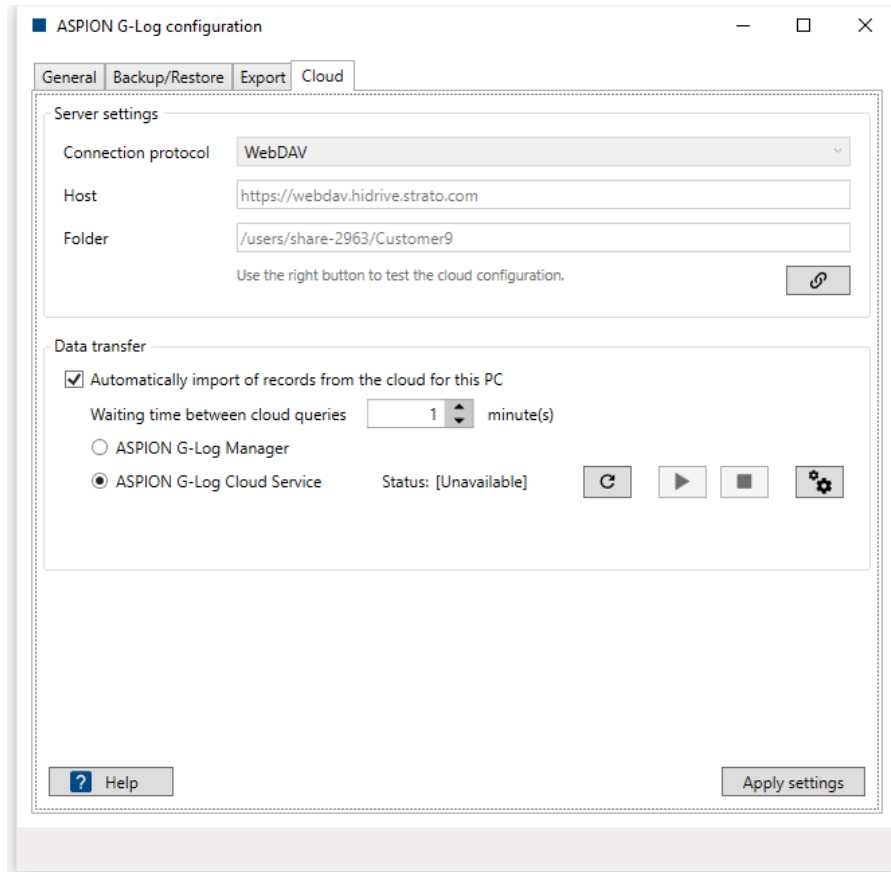


Test the cloud configuration by clicking  .

If the connection test fails, make sure that a firewall does not block access to the cloud.

## 6.2 Data transfer

The data is transferred from the cloud storage via the master program installation. It imports the analyses that are newly transferred from the cloud storage and makes them available to all users in their locally installed program version of the ASPION G-Log Manager Premium; shared network access is required.



**Important!** You activate the data transfer by ticking the **"Automatic import of records from the cloud for this PC"** checkbox. This activation must only be made for this one computer/server with the master program installation. An activation on several computers will provoke incorrect data analyses!

Define the interval (minutes) during which you want to query the cloud.

Define the master program installation for the data transfer:

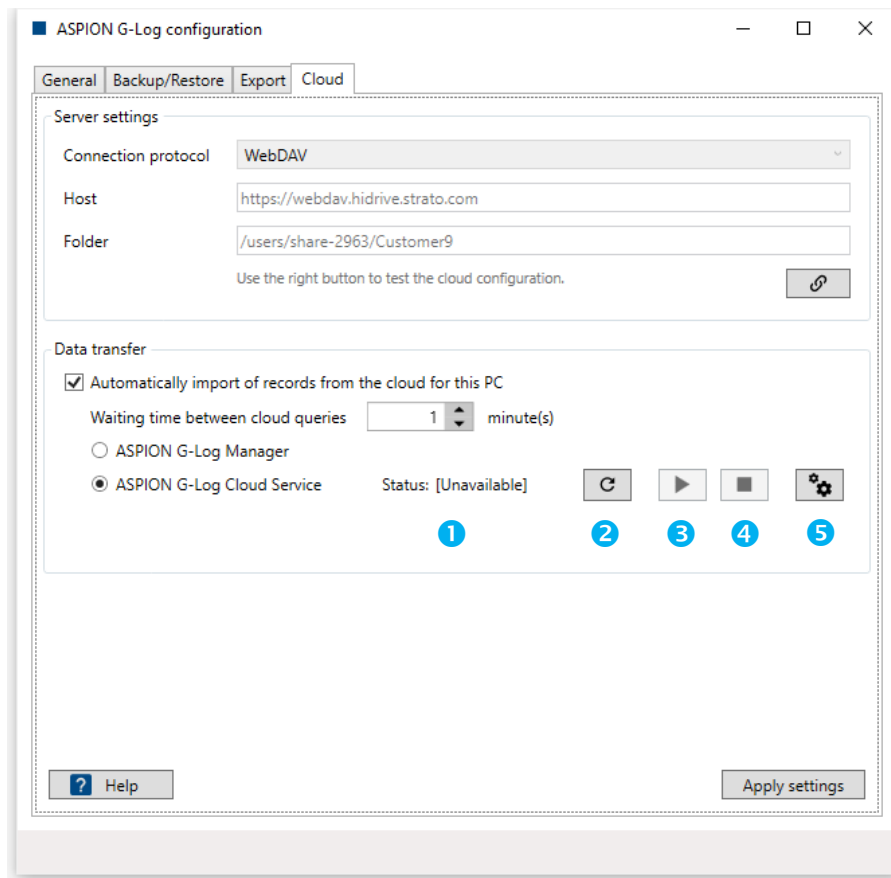
- **ASPION G-Log Manager** as local program installation  
transfers data when the ASPION G-Log Manager program is activated
- **ASPION G-Log Cloud Service** as Windows service on any computer/server  
automatically transfers data when the Windows service is activated

With the **Apply settings** button, you save all entries made in the currently active area.

If you have chosen the master program installation as local ASPION G-Log Manager installation, your settings of the configuration program will be applied and visible for users upon the next ASPION G-Log Manager Premium program start. The master program installation with cloud access has then successfully been completed.

### 6.3 ASPION G-Log Cloud Service

You set up the ASPION G-Log cloud service on any computer/server with the configuration program; the program installation does not affect the setup.



#### 1 Service status:

- [Unavailable] not installed
- [Running] installed, service is running
- [Stopped] installed, service is stopped
- [Disabled] deinstalled, but not completely removed  
(computer requires new start)

#### 2 Update status: updates the status, for example, if the service is controlled externally via the Management Console.

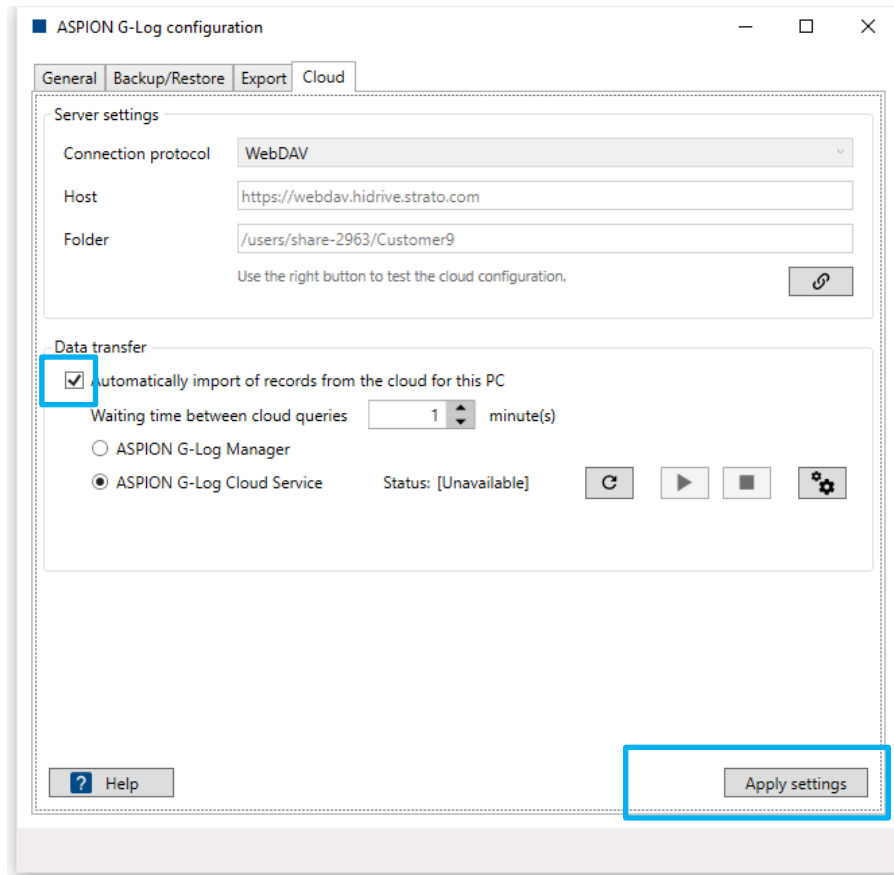
#### 3 Start service: starts the service

#### 4 Stop service: stops the service

#### 5 Open the Management Console: you access the Windows Management Console

## 6.4 Activating the cloud service

You activate the data transfer for the automatic import of the analyses from the cloud by ticking the **"Automatic import of records from the cloud for this PC"** checkbox. This activation must only be made for this one computer/server with the master program installation. An activation on several computers will provoke incorrect data analyses!



With the **Apply settings** button, you activate the cloud service. This installs and starts the service.



The status is displayed green [Running]. The service has been installed successfully and is now active. The service is automatically started upon every new start of the computer and transfers the analyses from the cloud to the defined data directory.

## 6.5 Deactivating the cloud service

You deactivate the service by unticking the **"Automatic import of records from the cloud for this PC"** checkbox or by setting the selection to "ASPION G-Log Manager".

With the **Apply settings** button, you save your settings and the cloud service is deactivated.


A red error status [Disabled] may be displayed (e.g. opened service in the Management Console). The service could not be completely deinstalled by Windows, but will be completely deinstalled the next time the program is newly started. If this status is displayed, no further action is possible with the service without a restart.

Data transfer

☐ Automatically import of records from the cloud for this PC

Waiting time between cloud queries  minute(s)

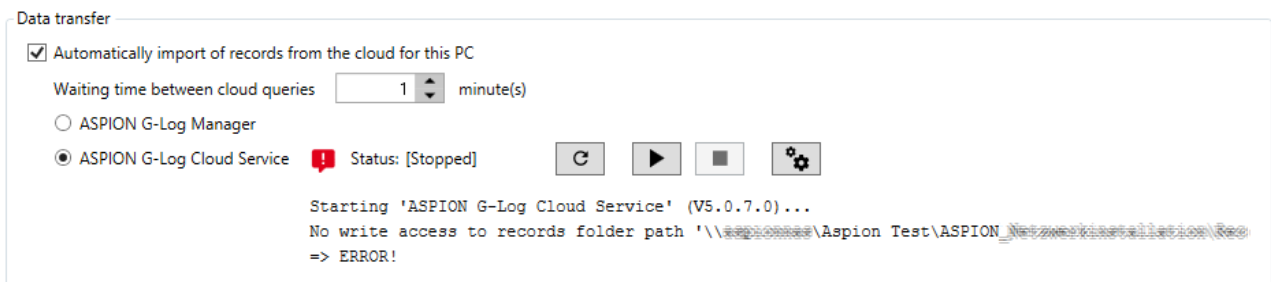
☐ ASPION G-Log Manager


☐ ASPION G-Log Cloud Service  Status: [Disabled]    

Please restart PC to fix service status.  
=> ERROR!

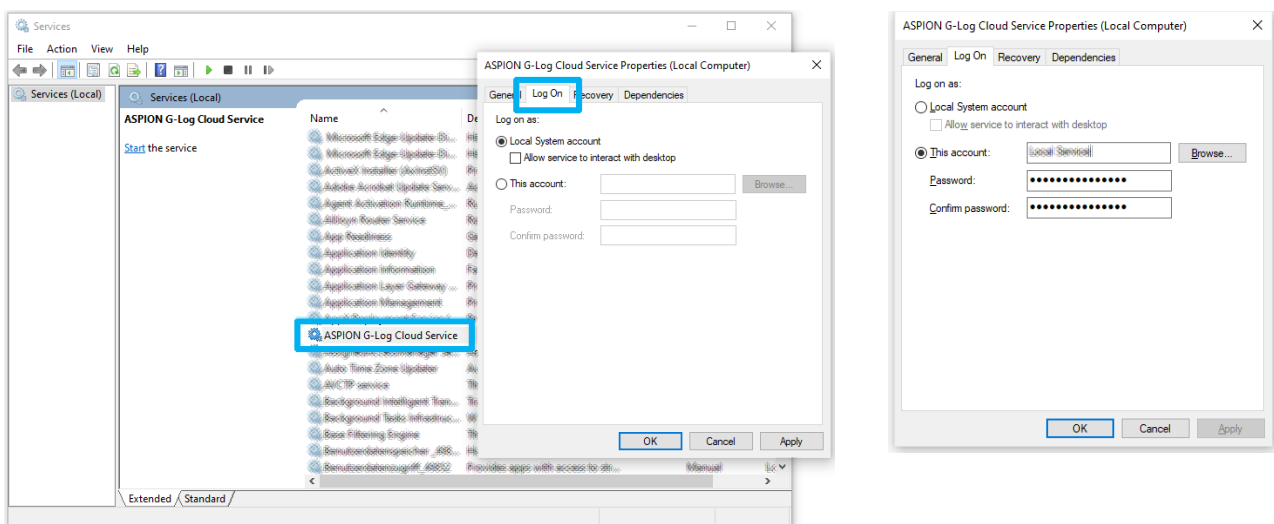
## 6.6 Error handling

If the data directory is located in the network, the service cannot access this directory. This behavior is displayed as error message and the service does not start.



Cause: a Windows service is started by default with the local system account. To solve the problem, open the Management Console for the services by clicking .

Select "ASPION G-Log Cloud Service" and open the "Log On" dialog.



Enter a user account with the corresponding password that has access to the selected drive. Close this dialog by clicking the **Apply** button and close the Management Console for the services.

Return to the configuration program. Restart the service (→ see chapter 5.3, ASPION G-Log Cloud Service). Now the service should start successfully.

## 7. Program installation for additional users

When installing the ASPION G-Log Manager for additional users, you differentiate between computers that can directly access the company network and computers that cannot access data on the company network.

### Computers with access to the company network

To install the program for additional users with shared data access in the company network, please follow the steps described in chapter 2, "Installation in the network". Close the installation process with **Apply settings**. When starting the ASPION G-Log Manager program, the settings are applied and will be made visible to the user. The installation of the program on the users' computer is finished. Repeat the installation steps to set up the program on more computers within the company network for additional users.

### Remote computers without access to the company network

The program setup for users without access to the company network is done in the same way as with the standard installation. Select a local directory to store the program data.

## 8. Operating the sensors with ASPION G-Log Premium

A sensor operated with the ASPION G-Log Premium version always contains the cloud address. This controls the transmissions. After the data has been read out via the App or the PC software, it is transferred to the cloud storage if an internet connection is available. Users can thus access the read-out data in the PC software within a few minutes, regardless of where the sensor is located. Users also receive information about the usage list as soon as an ASPION G-Log 2 has been activated via the App.

### 8.1 Activation via PC software and card reader

With ASPION G-Log Premium, all sensors are operated with PC software and card reader as with the standard version (→ see User manual). Users will not notice any differences when using the sensors.

### 8.2 Activation via Smartphone App via BLE – only for ASPION G-Log 2 (incl. Waterproof)

The ASPION G-Log 2 sensor (incl. Waterproof) in delivery state can be written via the Smartphone App using BLE; this option is only available for the ASPION G-Log 2 sensors (incl. Waterproof). This function is very useful if the sensor must be activated independently of the location and time, for example, by a service provider. The sensor can also be written through packaging via BLE. To ensure that data is written securely and with correct settings, please follow these two steps:

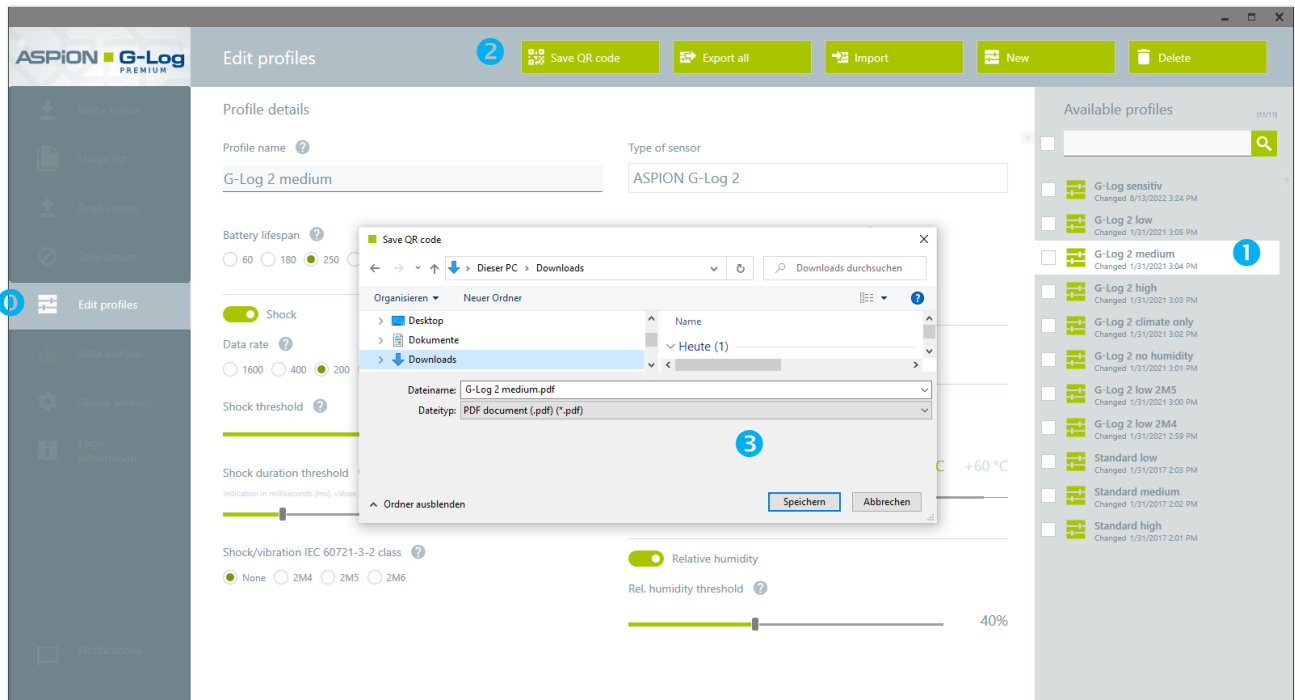
Step 1: Create profile settings including instructions (using the PC software ASPION G-Log Manager)

Step 2: Write sensor via App through BLE

**Important!** It is required that an ASPION G-Log 2 sensor is in the delivery state (corresponds to the state upon delivery) so that users can operate it via App.

## Step 1: Create profile settings including instructions (using the PC software ASPION G-Log Manager)

- 0 Select the **Edit profiles** function from the left area.

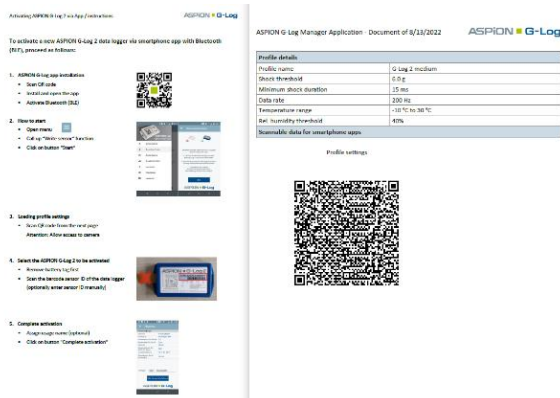


- 1 In the list area, select the Profile which you want to be activated via App.
- 2 Click **Save QR code** to create the PDF of the selected profile for the App user. The profile settings are saved in the QR code. The code contains all information about how to operate the sensor, including the global settings and cloud address.

Please note: The **Save QR code** button is only active for the ASPION G-Log 2 profile.

- 3 Save the PDF on your local computer on a selected drive. The program automatically suggests the profile name as file name, but users can rename the file. The PDF also contains a description with step-by-step instructions on how the App user can activate an ASPION G-Log 2 sensor.

## Step 2: Write sensor via App through BLE



With the description and the generated QR code from the PDF (see step 1), an App user can easily activate an ASPION G-Log 2 sensor. Both the instruction and the App support the App user step by step. You can make this PDF available to the App user, for example, via e-mail. The activation is done within seconds.

As soon as an ASPION G-Log 2 sensor is activated, the user of the PC software receives this activation information including the location as new entry in the usage list via cloud transfer. This puts you in control of the ASPION G-Log 2 sensors which are optionally activated via App.



## 9. Automatic transfer of analyses

The users of the Smartphone App as well as users of the ASPION G-Log Manager on a remote PC benefit from the automatic data transfer without further action. The analyses are transferred automatically to the cloud as soon as an internet connection is established. The user can easily and quickly control this process. The following icons are used in the display:



Waiting for cloud upload




Cloud upload successfully executed







The icon for the analysis is either green or blue: new analyses are blue. If the bar graph is displayed in green, the analysis has already been marked as completed or no exceedances have been recorded.

### Successful transfer via the Smartphone App




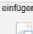
You operate the Smartphone App in the same way as the standard version (→ see User manual ASPION G-Log App for smartphones). But App users benefit from the automatic transfer of data analyses which do not have to be sent by e-mail. The analysis is automatically transferred to the cloud as soon as a data connection is established via mobile phone or WIFI. The App can also remain active in the background. If the data transfer has been successful, it is marked in the menu with the  icon via the **Read out data** function.

**Tip:** You can download a short description of the ASPION G-LOG Premium App for your customers from our ASPION customer portal on our website. You can also complete the template with your individual data.

**Preview of the short description for your customers, available in the ASPION customer portal.**

	
<p><b>THIS SHIPMENT IS TRACKED BY A DIGITAL SHOCK RECORDER!</b>  <b>DIESE SENDUNG WIRD MIT EINEM DIGITALEN SCHOCKREKORDER ÜBERWACHT!</b></p>	
<p><b>Dear customer,</b>            we have equipped this shipment with a digital shock indicator from ASPION. You only need an NFC-ready smartphone and the G-Log App to read out the data recorded by the sensor. The complete transport can be visualized in regards of shocks and temperatures recorded.</p> <p>➊ <b>Get the free Smartphone-App ASPION G-Log by scanning the QR-Code</b>            NFC-ready smartphone with Android version 4.1 and later / iPhone 7 and newer devices with iOS version 11 and later</p> <p>➋ <b>Read out the sensor with the App</b>            Place your smartphone close to the sensor in the area of the NFC antenna. The location is determined if the location service is activated.</p> <p>➌ <b>Wait until the data is transferred</b>            Click on ➔. The system displays a list of analyses. The transfer is completed when this icon is displayed: </p>	<p><b>Lieber Kunde,</b>            wir haben Ihre Sendung mit einem digitalen Schockindikator der Firma ASPION ausgestattet. Sie können mit einem NFC-fähigen Smartphone und der G-Log App den Sensor auslesen und so den Transportverlauf in Bezug auf Stöße und Temperatur abrufen.</p> <p>➊ <b>Scannen Sie den QR-Code mit Ihrem Smartphone und installieren Sie die App</b>            NFC-fähiges Smartphone mit Android Version 4.1 und höher / iPhone 7 und neuere Geräte mit iOS Version 11 und höher</p> <p>➋ <b>Lesen Sie den Sensor mit der App aus</b>            Halten Sie Ihr Smartphone ganz nah an den Sensor im Bereich der NFC-Antenne. Der Standort wird ermittelt, sofern der Ortungsdienst aktiviert ist.</p> <p>➌ <b>Warten Sie, bis die Daten übertragen sind</b>            Klicken Sie auf den Pfeil ➔. Sie erhalten die Liste mit Auswertungen. Die Übertragung ist abgeschlossen, sobald dieses Symbol erscheint: </p>
<p><b>Additional information</b>            Insert your information here</p>	<p><b>Zusätzliche Informationen</b>            Informationen hier einfügen</p>
<p><b>Kontakt / Contact person</b>            Herr Mustermann            E-Mail: info@mustermann.com            T: 0049 / 0000 123456            M: 0049 / 0000 123456</p>	<p><b>Firmenlogo einfügen</b>  </p>

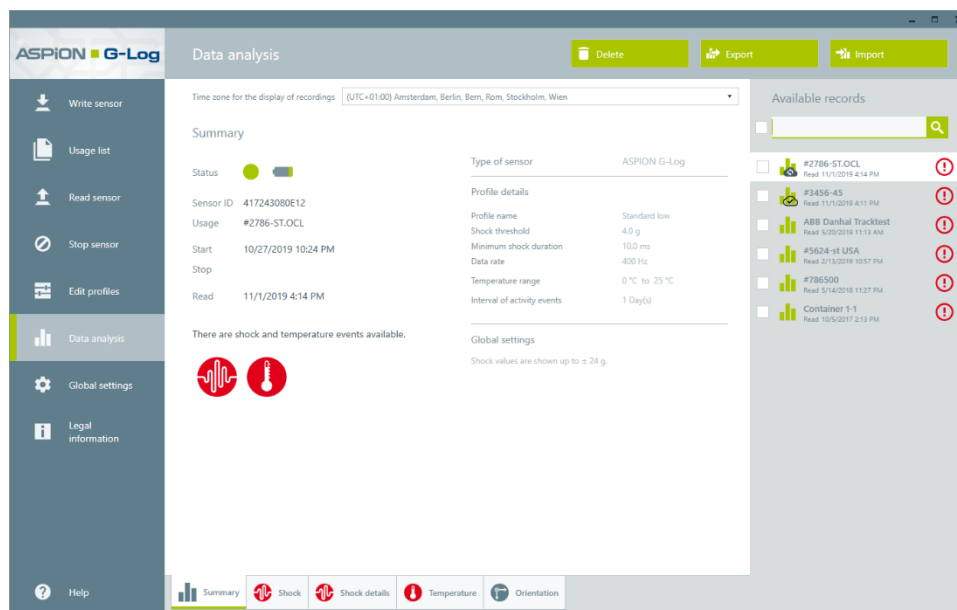
	
<p><b>THIS SHIPMENT IS TRACKED BY A DIGITAL SHOCK RECORDER!</b>  <b>DIESE SENDUNG WIRD MIT EINEM DIGITALEN SCHOCKREKORDER ÜBERWACHT!</b></p>	
<p><b>Dear consignee,</b>            this shipment is equipped with a digital shock sensor from ASPION. You only need an NFC/BLE-ready smartphone and the G-Log App to read out the data recorded by the sensor. The complete transport can be visualized in regards of shocks and climate recorded.</p> <p>➊ <b>Get the free Smartphone-App ASPION G-Log by scanning the QR-Code</b>            NFC/BLE-ready smartphone with Android version 4.4 and later or iOS version 11 and later</p> <p>➋ <b>Read out the sensor with the App</b>            with BLE: Click on "Start search" and follow the instructions            with NFC: Place your smartphone without distance close to the sensor in the area of the NFC antenna. The location is determined if the location service is activated.</p> <p>➌ <b>Wait until the data is transferred</b>            Click on ➔. The system displays a list of analyses. The transfer is completed when this icon is displayed: </p>	<p><b>Lieber Empfänger,</b>            diese Sendung ist mit einem digitalen Schocksensor der Firma ASPION ausgestattet. Sie können mit einem NFC oder BLE-fähigen Smartphone und der G-Log App den Sensor auslesen und so den Transportverlauf in Bezug auf Stöße und Klima abrufen.</p> <p>➊ <b>Scannen Sie den QR-Code mit Ihrem Smartphone und installieren Sie die App</b>            NFC/BLE-fähiges Smartphone mit Android ab Version 4.4 oder mit iOS Version 11 und höher</p> <p>➋ <b>Lesen Sie den Sensor mit der App aus</b>            mit BLE: Klicken Sie auf "Suche starten" und folgen Sie den Anweisungen            mit NFC: Halten Sie Ihr Smartphone direkt ohne Abstand an den Sensor im Bereich der NFC-Antenne. Der Standort wird ermittelt, sofern der Ortungsdienst aktiviert ist.</p> <p>➌ <b>Warten Sie, bis die Daten übertragen sind</b>            Klicken Sie auf den Pfeil ➔. Sie erhalten die Liste mit Auswertungen. Die Übertragung ist abgeschlossen, sobald dieses Symbol erscheint: </p>
<p><b>Additional information</b>            Insert your information here</p>	<p><b>Zusätzliche Informationen</b>            Informationen hier einfügen</p>
<p><b>Kontakt / Contact person</b>            Herr Mustermann            E-Mail: info@mustermann.com            T: 0049 / 0000 123456            M: 0049 / 0000 123456</p>	<p><b>Firmenlogo einfügen</b>  </p>


Short description for ASPION G-Log


ASPION G-Log 2

### Successful transfer via remote computer

Reading out the sensors follows the same steps as with the Standard version (→ see User manual ASPION G-Log Manager – PC software, chapter 8, "Reading the sensor"). But users benefit from the automatic transfer of analyses to the cloud if an internet connection exists. By changing to the **Analyses** function, you can check whether the transfer was successful.



Analyses with  have successfully been transferred to the cloud.

Analyses with  have not yet been transferred to the cloud. Analyses that still need to be transferred are transferred automatically to the cloud as soon as an internet connection is established and are marked accordingly.

## Contact and support

### Manufacturer

If you have any questions or problems, please contact:

**ASPiON GmbH**

76149 Karlsruhe, Germany

[www.aspion.de/en](http://www.aspion.de/en)

Support hotline: +49 (0)721 / 8 51 49-128

E-mail support: [support@aspion.de](mailto:support@aspion.de)

For FAQs and more helpful information, please go to our ASPiON customer portal at [www.aspion.de/en](http://www.aspion.de/en).